



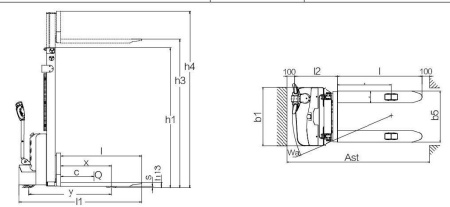
**Characteristics:**

1. High-power and high-performance lifting pump has high efficiency.
2. Side driving design gives the truck a small steering radius and broadened view.
3. The driving system with permanent magnetic motor has small volume, light mass, small loss.
4. Water-proof inching switch imported from German meets the requirements of harsh working condition such as cold, humidity and dust circumstances.
5. Four colors LED electricity meter makes it simple and direct to read.
6. External positioned charger has better cooling performance.
7. It's more comfortable and easy for operation using a super long handle that integrates lifting button, key switch, electricity meter, which is suitable for ergonomics; more accurate speed control with the turtle speed switch; more durable with the high quality air-pressure springs which allows slowly and automatically reset.
8. Iron steel guard with high density is durable, firm and has high protection effect.
9. Maintenance-free battery

**CDD15J**  
Electric pallet stacker

**Manufacturer's Data and Design Characteristics**

Characteristics							
1.1	Manufacturer	HELI					
1.2	Model	CDD15J					
1.3	Operation	Pedestrian propelled					
1.4	Rated traction weight	Q (kg)	1500				
1.5	Mast type	Single mast	2-Stage STD				
1.6	Lift	h3 (mm)	1600	2000	2500	3000	3500
1.7	Capacity at highest height	kg	1500	1300	1100	900	750
1.8	Service weight with battery	kg	430	471	483	495	507
1.9	Load centre	c (mm)	600				
1.10	Axle centre to fork face	x (mm)	720				
1.11	Wheel base	y (mm)	1167				
Wheels							
2.1	Wheels type	Polyurethane					
2.2	Driving wheel size	φ × v (mm)	φ210 × 70				
2.3	Bearing wheel size	φ × v (mm)	φ80 × 70				
2.4	Additional wheels ( dimensions )	φ × v (mm)	φ115 × 55				
2.5	Wheels, number front/rear (x = driven)	1x+114					
Dimensions							
3.1	Height of mast, lowered	h1 (mm)	2014	1495	1745	1995	2245
3.2	Height of mast, extended	h4 (mm)	2014	2424	2524	3424	3924
3.3	Fork Height, Lowered	h13 (mm)	86				
3.4	Overall length	l (mm)	1740				
3.5	Length to fork face	2 (mm)	590				
3.6	Overall width	b1/b2 (mm)	795				
3.7	Fork dimensions	s1/s1 (mm)	60/160/115C				
3.8	Width of forks	b5 (mm)	550/570/650/635				
3.9	Min.Ground clearance	r2 (mm)	26				
3.10	Aisle width with pallet1000 × 1200 across forks	Ast (mm)	2074				
3.11	Aisle width with pallet800 × 1200 along forks	Ast (mm)	2040				
3.12	Min.Turning radius	Wa (mm)	1342				
Performance							
4.1	Travel speed,with/without load	(km/h)	4.0/4.2				
4.2	Lifting speed, with/without load	(mm/s)	92/136				
4.3	Lowering speed, with/without load	(mm/s)	112/98				
4.4	Max. gradeability laden/unladen	(%)	6/8				
4.5	Service brake	Electromagnetic brake					
Drive and Battery							
5.1	Drive motor output S2 60 min.	(kW)	0.75				
5.2	Lift motor rating at S5 15%	(kW)	2.2				
5.3	Battery according to JIN43531/35/36 A,B,C,no	no					
5.4	Battery voltage/rated capacity	(V/Ah)	2 × 12/100				
5.5	Battery weight ( ± 5%)	(kg)	2 × 27				
Others							
6.1	Noise level at operator 's ear	(dB(A))	69				
6.2	Steering type	Mechanical steering					



**ANHUI HELI CO., LTD.**  
ADD: NO.668 Fangxing Street, Economical Development Zone, Hefei, P.R.China  
TEL: (86 551) 63639068 (America); 63639258 (Europe);  
63639358 (Asia); 63662105 (Africa & Middle East);  
63639530 (Warehouse Equipment); 63639531 (Wheel loader)  
FAX: (86 551) 63639966  
WEBSITE: <http://www.helichina.net>

AUTHORIZED DEALER

\* Our products are subject to improvements and changes without notice.